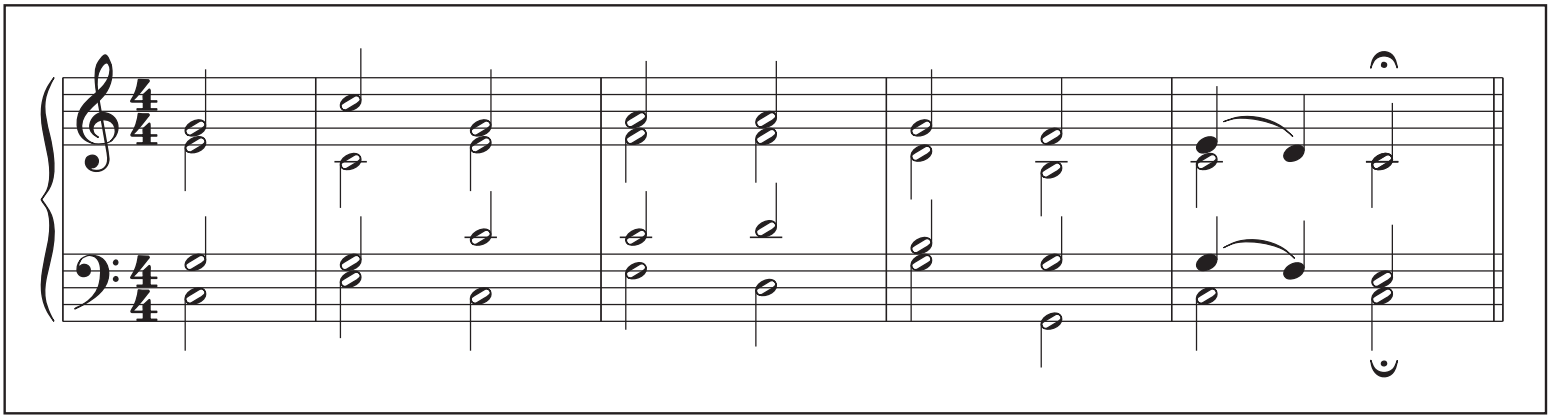
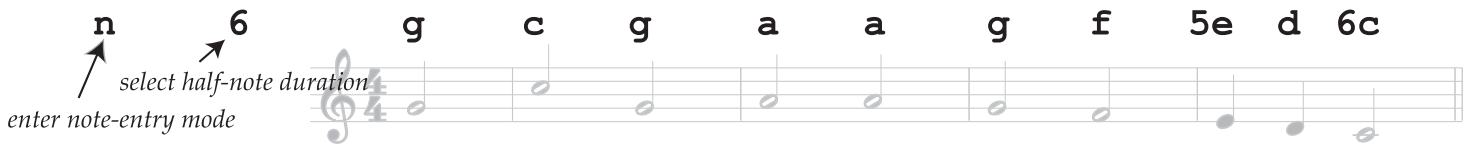


Exercise 4: Upper/Lower Staff Voices



1. Create a new score with *ctrl/⌘-n*: Template file: *General > Grand Staff*. Time signature 4/4. Pickup measure 2/4. 4 measures.

2. Enter music for top staff:



3. Add fermata to current note: Open palette “Articulations” (press **F9** if palettes not visible). Double-click on fermata to add to current note.

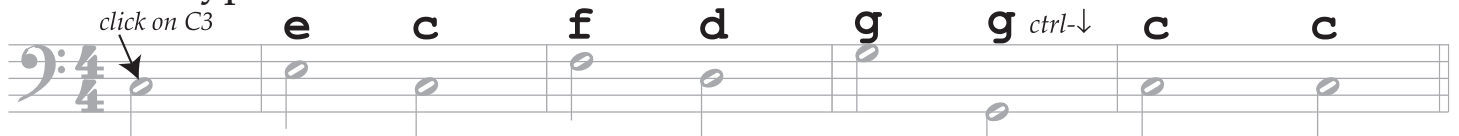
4. Enter music for bottom voice on top staff: Click on “2” button to switch to 2nd voice (*ctrl-alt-2*, or *⌘-2*). Click on E4 for first note, then type:



5. Enter music for top voice of bottom staff: Click on “1” (*ctrl-alt-1*, or *⌘-1*). Click on G3 at start of music and then type:



6. Enter bottom voice of bottom staff: Click on “2”, then click on C3 at start of music, then type:



7. Add fermata to current note: select fermata from articulations palette.

8. Add slurs: Press *esc* to exit note-entry mode. Click on first note of each slur and type “s”.

9. Change style of final barline: Click on final barline. Open “Barlines” palette. Double-click on double thin barline style.