

Inner Metric Analysis

An approach to the analysis of metric structures.
Developed by Thomas Noll and Anja Volk (and maybe others).

Inner vs Outer

- ▶ Only the structure of the onset data is taken into consideration. The relation to external entities like bar lines or time signatures are not taken into consideration.
- ▶ Immune to notational (or data format) issues.
- ▶ Reveals accent patterns (positions of strong and weak pulses in a given metric framework)
- ▶ While time signatures often remain constant, inner metric analysis aims at being able to deal with metric structures that vary over time.

Meter and Rhythm

- ▶ Rhythmic characteristic of an onset locations depends on an underlying meter, while the meter is established by the locations of the onsets.
- ▶ A chicken and egg problem.

Free Meters

- ▶ Musical onsets are modeled by rational numbers $x \in \mathbb{Q}$ understood as a \mathbb{Z} -module.
- ▶ Each period δ generates a unique submodule δ in \mathbb{Q} .
- ▶ Given a period δ and a phase $0 \leq \phi < \delta$, the corresponding free meter is $\Phi(\delta, \phi) = \phi + \langle \delta \rangle$.

It's simple

Free Meters

From the introduction by Thomas Noll:

- ▶ Musical onsets are modeled by rational numbers $x \in \mathbb{Q}$ understood as a \mathbb{Z} -module.
- ▶ Each period δ generates a unique submodule δ in \mathbb{Q} .
- ▶ Given a period δ and a phase $0 \leq \phi < \delta$, the corresponding free meter is $\Phi(\delta, \phi) = \phi + \langle \delta \rangle$.

It's simple **if you say it in english and show it with examples**

Local Meters

- ▶ Any chain of equal durations with at least three elements forms a local meter.
- ▶ Chains of events with equal distant between them can have events between them.

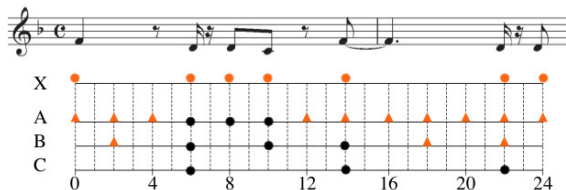


Figure 1. Local Meters in excerpt from “The Girl From Ipanema.”

Metric Weights

- ▶ The metric weight is calculated by summing the squared length of all local meters that the given onset is contained in.
- ▶ The metric weights for the example are [0, 12, 4, 8, 8, 4].



Figure 1: Period Weight of Fuge C Minor from J.S.Bach's *Wohltemperiertes Klavier Part I*

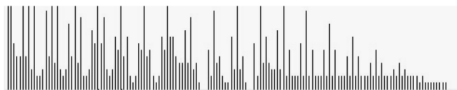


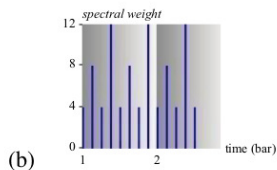
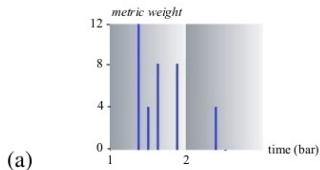
Figure 2: Period Weight of Fuge D Major from J.S.Bach's *Wohltemperiertes Klavier Part I*



Figure 3: Period Weight of a random set of Onsets

Spectral Weights

- ▶ In the spectral weight approach, each local meter contributes to the weight of onsets in its extension throughout the piece.
- ▶ Exists not only for note events, but also for rests
- ▶ not as sensitive to local changes in the inner meter as the metric weight.



Relation to Metric Rulers

- ▶ Clarence Barlow's IDP calculation

Meter <2:2:2> 4/4








Meter <3:2> 3/4



Meter <2:3,3,2>



-  Chew, E., Volk, A., and Lee, C.-Y. (2005).
Dance music classification using inner metric analysis.
In The Next Wave in Computing, Optimization, and Decision Technologies, pages 355–370. Springer.
-  Fleischer, A.
Syncopa; on and metric structure.
-  Nestke, A., Noll, T., et al. (2001).
Inner metric analysis.
Music and Mathematics, pages 91–111.
-  Noll, T.
Informationen zur mathematischen musiktheorie.
-  van Kranenburg, P., Volk, A., Wiering, F., and Veltkamp, R. C. (2009).
Musical models for folk-song melody alignment.
In Proc. International Conference on Music Information Retrieval (ISMIR), pages 507–512.



Volk, A. (2002).

A model of metric coherence.

In Proceedings of the 2nd Conference on Understanding and Creating Music.



Volk, A. (2004a).

Exploring the interaction of pulse layers regarding their influence on metrical accents.

In Proceedings of the 8th International Conference on Music Perception and Cognition, pages 435–438.



Volk, A. (2004b).

Metric investigations in Brahms symphonies.

Perspectives of Mathematical and Computational Music Theory, pages 300–329.



Volk, A. (2005a).

Coffee bean (and other) models about the metric structure of music.

Models and Human Reasoning, pages 319–328.



Volk, A. (2005b).

Modeling a processive perspective on meter in music.
In Proceedings of the International Computer Music Conference, pages 251–254.



Volk, A. (2008a).

The generation of metric hierarchies using inner metric analysis.



Volk, A. (2008b).

Persistence and change: local and global components of metre induction using inner metric analysis.
Journal of Mathematics and Music, 2(2):99–115.



Volk, A. (2008c).

The study of syncopation using inner metric analysis: Linking theoretical and experimental analysis of metre in music.
Journal of New Music Research, 37(4):259–273.



Volk, A. (2009).

Applying inner metric analysis to 20th century compositions.
In *Mathematics and Computation in Music*, pages 204–210.
Springer.



Volk, A., Garbers, J., Van Kranenburg, P., Wiering, F.,
Veltkamp, R. C., and Grijp, L. P. (2007).

Applying rhythmic similarity based on inner metric analysis to
folksong research.

In *Proceedings of the Eighth International Symposium on
Music Information Retrieval*, pages 293–300. Citeseer.



Volk, A., Wiering, F., and van Kranenburg, P. (2011).

Unfolding the potential of computational musicology.
In *Proceedings of the 13th International Conference on
Informatics and Semiotics in Organisations (ICISO)*,
Leeuwarden, the Netherlands, pages 137–144.