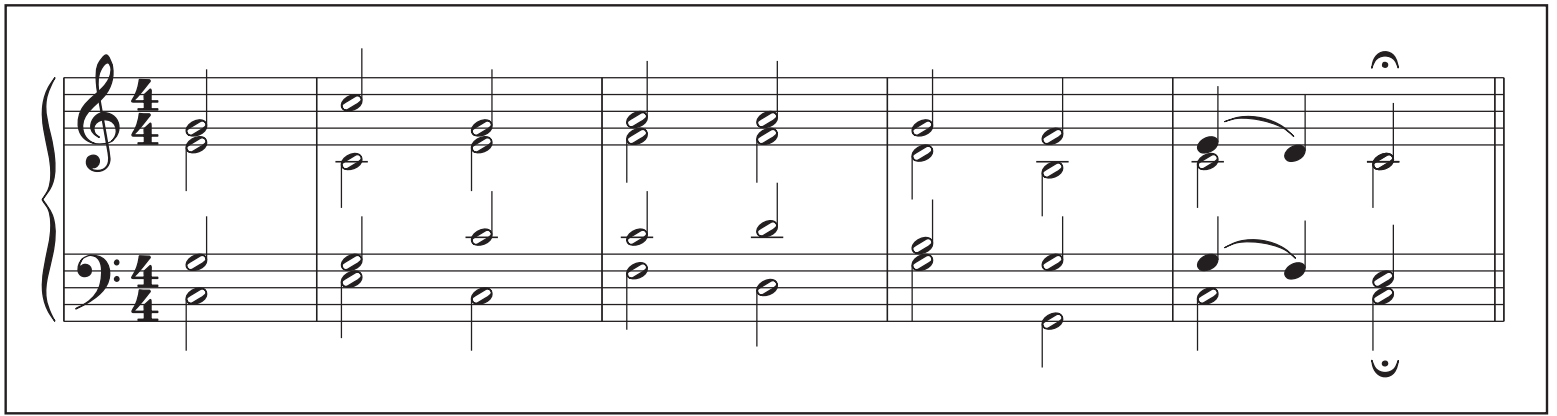
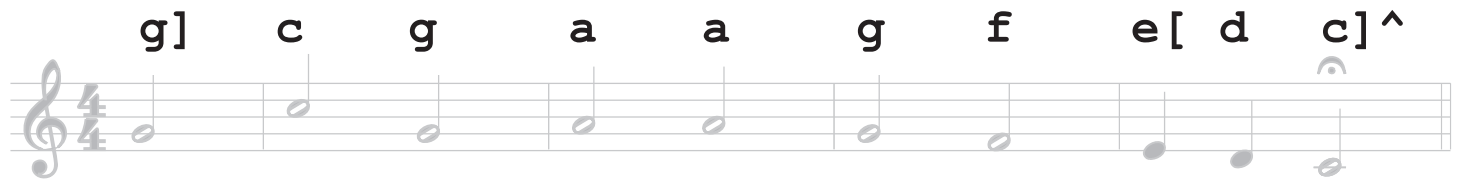


Noteflight 2.0 Exercise 4: Upper/Lower Staff Voices



1. Create a pickup measure with a duration of a half note.
2. Enter the notes of the top voice on the top staff:

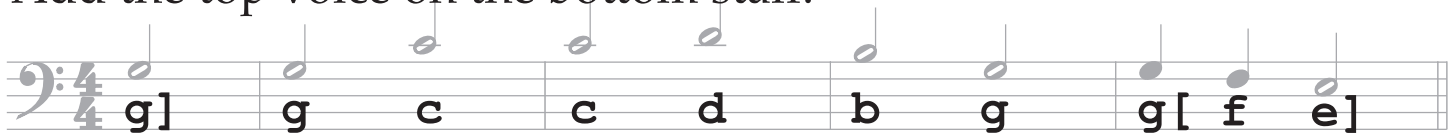


3. Enter lower voice on top staff by clicking on the first note of the soprano line and then pressing L to start entering a lower voice:

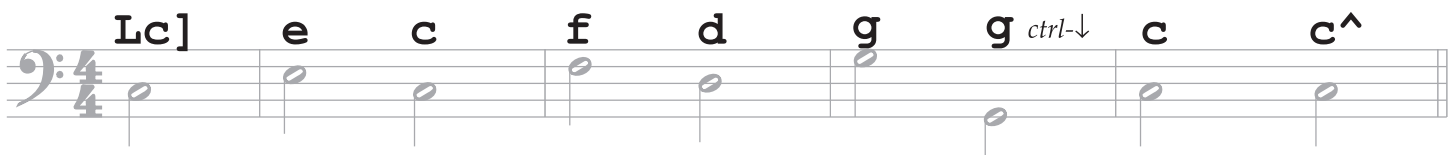


- type **U** or **u** to move from the lower voice to the upper voice.
- type **L** or **l** to move from the upper voice to the lower voice.
- type **M** or **m** to delete the current voice in the measure, leaving only the other voice.

4. Add the top voice on the bottom staff:



5. Add the bottom voice on the bottom staff by clicking on the first note of the upper voice, and then typing L:



6. Erase the empty measures after the music and change the style of the ending barline.
7. Add slurs by clicking on first note of slur and pressing "s". Then adjust the shape of the slurs by moving the control points.